

## ULTRA HIGH PRESSURE ALUMINIUM HAND PUMP (2.800 BAR)



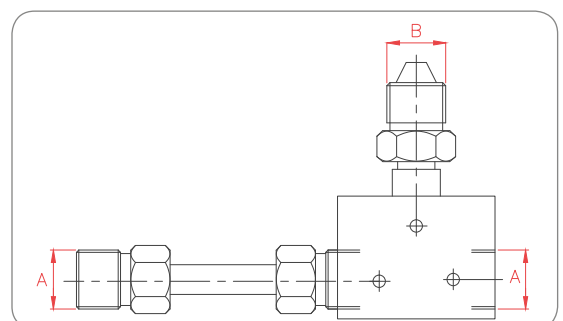
- ✓ WA series pumps are for use with Single Acting tools.
- ✓ Lightweight aluminium pump, ideal for easy portability and handling.
- ✓ Two speed models.
- ✓ Hydraulic outlet port: 3/4"-16 UNF female.
- ✓ Fitted with handle clip for ease of carrying.
- ✓ 3.000 bar accessories available: hoses, couplers, adaptors and gauge.

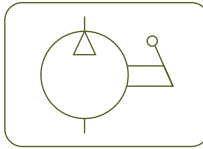
### 3.000 BAR PRESSURE GAUGE

Model	Pressure	Scale	Ext. Ø	Width	Thread	Model
LARZEP	bar	bar	mm	mm	mm	LARZEP
AV43010	3.000	50	100	60	Female M16x1.5	AZ1530

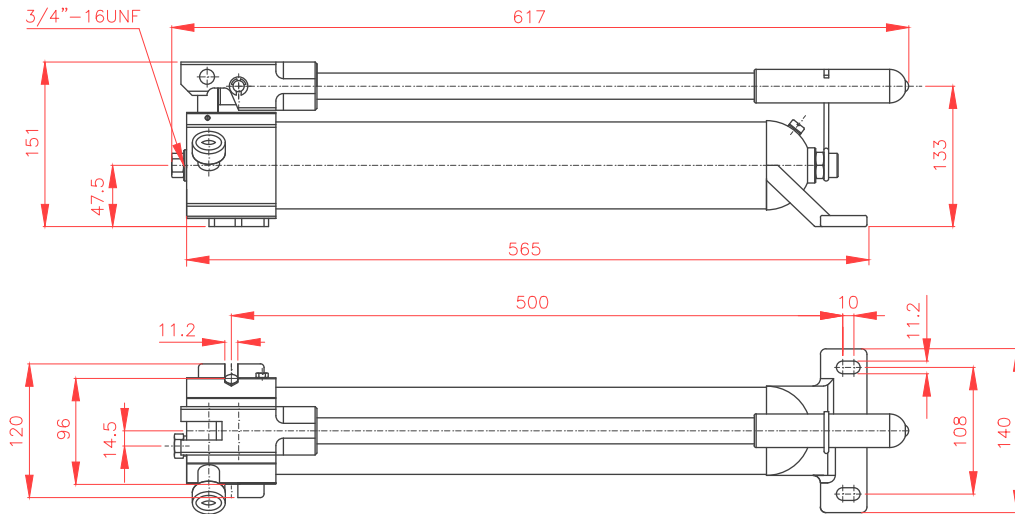
### 3.000 BAR GAUGE ADAPTOR

Model	A	B
LARZEP	60° Cone	60° Cone
AZ1530	3/4"-16 UNF	M16x1.5





Type	<b>WA</b>
Capacity	<b>1,0 litre</b>
Max. pressure	<b>2.800 bar</b>



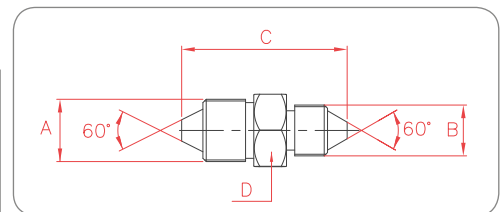
Model	Usable oil cm <sup>3</sup>	Handle effort kg	Oil displacement per stroke (cm <sup>3</sup> )		Pressure rating (bar)		Weight kg
			1 <sup>st</sup> Stage	2 <sup>nd</sup> Stage	1 <sup>st</sup> Stage	2 <sup>nd</sup> Stage	
<b>WA21028</b>	1.000	43	12,9	0,65	14	2.800	4,5

**HOSES MAXIMUM WORKING PRESSURE 3.000 BAR**

Int. Ø mm	End mm	Pressure bar	Length (m)							
			0,8	1,5	2	3	4	6	8	10
3,9	M16x1.5	3.000	<b>AP6008</b>	<b>AP6015</b>	<b>AP6020</b>	<b>AP6030</b>	<b>AP6040</b>	<b>AP6060</b>	<b>AP6080</b>	<b>AP6100</b>

**3.000 BAR ADAPTOR**

Model	A	B	C	D
LARZEP	60° Cone	60° Cone	mm	mm
<b>AZ1107</b>	3/4"-16 UNF	M16x1.5	50	22



**3.000 BAR BALL COUPLERS**

Flow l/min	Coupling	Model	Thread	Pressure bar
4,6	Male	<b>AZ3330</b>	Female M16x1.5	3.000
	Female	<b>AZ3350</b>	Female M16x1.5	3.000

