

DYNAMOMETERS & LOAD CELLS**LARZEP advantages**

- Accuracy ± 4 % full scale.
- From 5 to 100 Tn versions available for dynamometers, and from 5 to 150 Tn versions for load cells. Contact us for other capacities.
- Includes glycerine filled gauges with maximum indicating pointer.

CT DYNAMOMETERS

- Measure loads in compression.
- Can be used for measuring tension loads in cables, tensile testing and can be used as a weighing device.

C LOAD CONTROL CELLS

- Portable compression load cells, measure loads in compression.
- Remote mounted gauges with hose available on request.

Larzep designs and manufactures special cylinders to place a load cell for pile testing.



CT - C

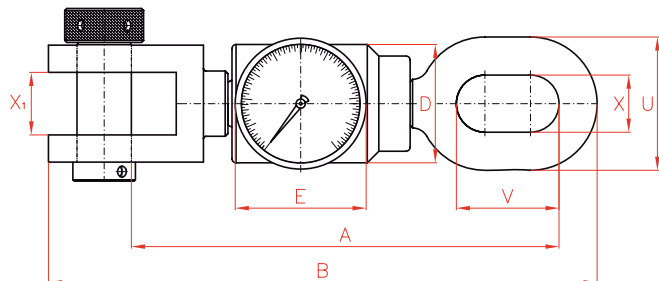
5-150 Tn.

700 bar

TOOLS

DYNAMOMETERS

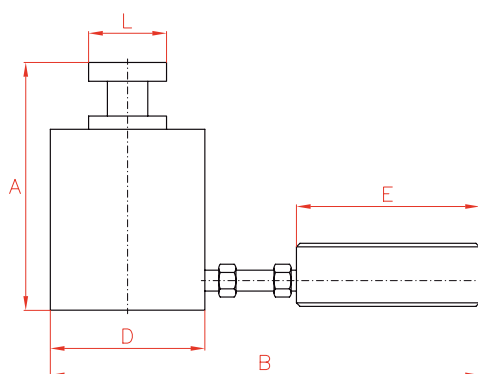
CT



| Capacity | | Model | A | B | D | E | U | V | X | X1 | Weight | Gauge | |
|----------|-------|---------|-----|-----|-----|-----|-----|-----|-----|-----|--------|---------|------------|
| Tn | kN | LARZEP | mm | mm | mm | mm | mm | mm | mm | mm | kg | Model | Scale (Tn) |
| 5 | 49 | CT00525 | 328 | 397 | 87 | 100 | 98 | 98 | 42 | 46 | 12,5 | AX00510 | 0,05 |
| 10 | 98 | CT01025 | 367 | 446 | 102 | 100 | 107 | 108 | 46 | 50 | 18,5 | AX01010 | 0,1 |
| 30 | 303 | CT03025 | 447 | 563 | 125 | 100 | 108 | 153 | 50 | 70 | 27,0 | AX03010 | 0,3 |
| 50 | 486 | CT05025 | 643 | 793 | 148 | 100 | 130 | 150 | 50 | 50 | 50,0 | AX05010 | 0,5 |
| 100 | 1.026 | CT10025 | 726 | 851 | 260 | 100 | 296 | 146 | 146 | 146 | 120,0 | AX10010 | 1 |

LOAD CELLS

C



DDR200015 cylinder. 2.000 Tn capacity cylinder to place a load cell for pile testing.

| Capacity | | Model | A | B | D | E | L | Weight | Gauge | |
|----------|-------|--------|-----|-----|-----|-----|-----|--------|---------|------------|
| Tn | kN | LARZEP | mm | mm | mm | mm | mm | kg | Model | Scale (Tn) |
| 5 | 44 | C00510 | 43 | 212 | 60 | 100 | 25 | 1,9 | AX00510 | 0,05 |
| 10 | 99 | C01010 | 54 | 235 | 83 | 100 | 38 | 2,3 | AX01010 | 0,1 |
| 30 | 287 | C03010 | 72 | 266 | 114 | 100 | 60 | 4,8 | AX03010 | 0,3 |
| 50 | 486 | C05010 | 84 | 292 | 140 | 100 | 61 | 7,3 | AX05010 | 0,5 |
| 100 | 953 | C10010 | 103 | 330 | 178 | 100 | 88 | 15,7 | AX10010 | 1 |
| 150 | 1.449 | C15010 | 116 | 368 | 216 | 100 | 111 | 25,7 | AX15010 | 1,5 |